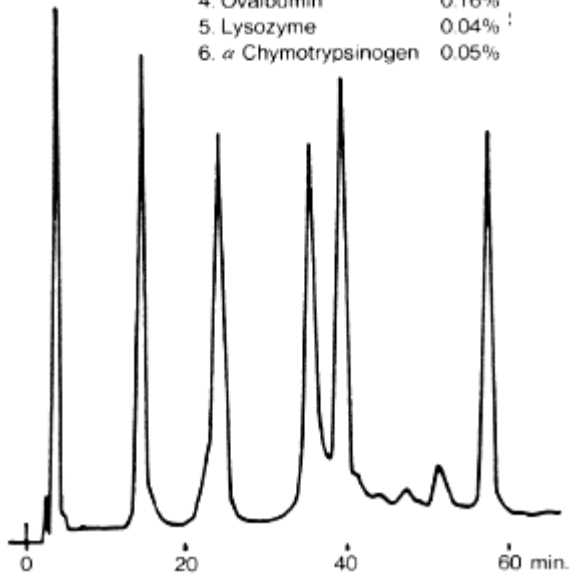


Sample: 370 μ l
1. Cytochrome c 0.03%
2. Myoglobin 0.08%
3. Ribonuclease A 0.16%
4. Ovalbumin 0.16%
5. Lysozyme 0.04%
6. α Chymotrypsinogen 0.05%



Column : Shodex HIC PH-814 (8.0mmID*75mm)
Eluent : (A); (B) + 1.8M Ammonium sulfate
(B); 0.1M Phosphate buffer (pH7.0)
Linear gradient: 0min to 60min, (A) to (B)
Flow rate : 1.0mL/min
Detector : UV (280nm)
Column temp. : Room temp.